



# **Washington's Wildlife Action Plan**

**Pathways to Success**



# First Steps

Rough timeline: one year

- Internal WAP

- ◆ Awaiting results of the WDFW Strategic Plan process
- ◆ Fits well with the Washington Biodiversity Initiative and Counsel



# First Steps

- WAP promotion
  - ◆ Rebuild TWW coalition to develop/support a legislative vehicle for long-term funding
  - ◆ Integrate the WAP into other major, existing laws/appropriations, e.g. Farm Bill, Transportation, LIP, SWGs, etc.



# Wildlife Action Plan Tools



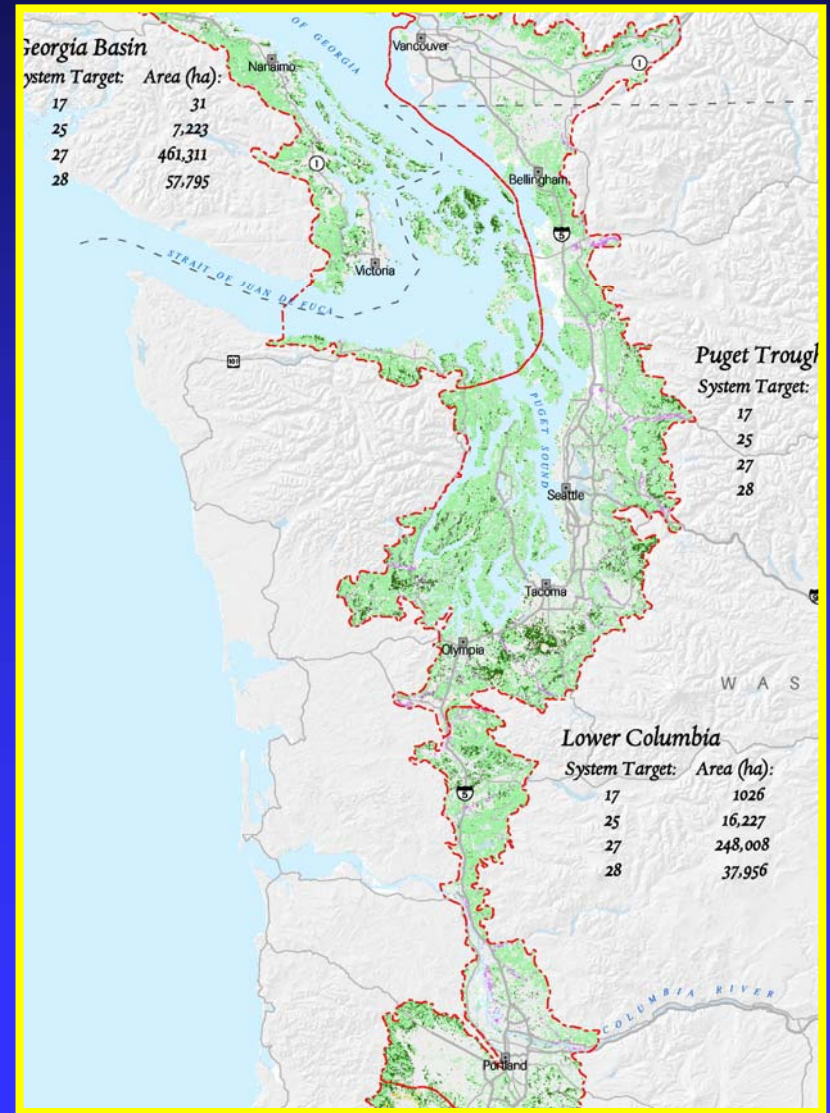
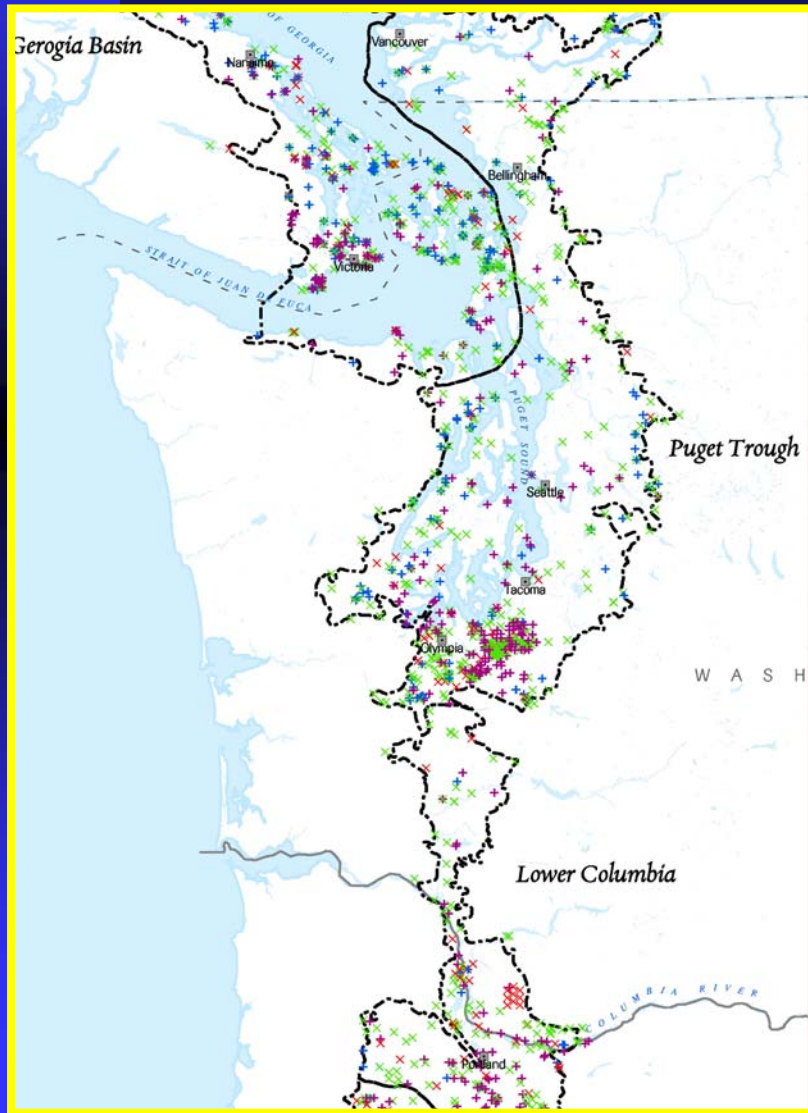
# Ecoregional Assessments

- Instrument or tool:
  - ◆ Biodiversity options index (BOI) maps
  - ◆ Conservation opportunity areas



# Locations of Species and Rare Habitats

# Map of Priority Habitat Types



**GIS data**

**Species and Habitat  
Locations**

**GIS data**

**Suitability  
Index**

**Selection Algorithm**

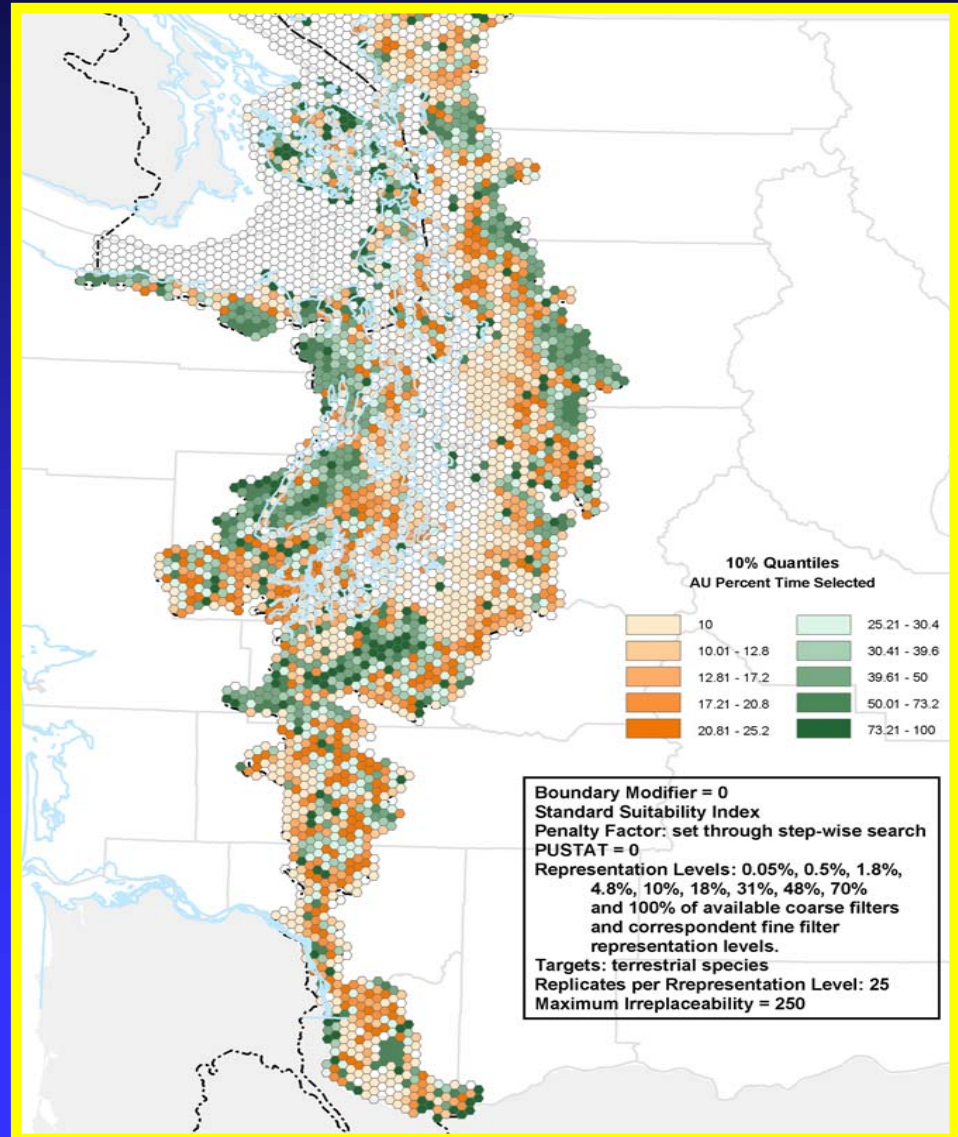
**Biodiversity  
options index**

**Conservation  
opportunity areas**

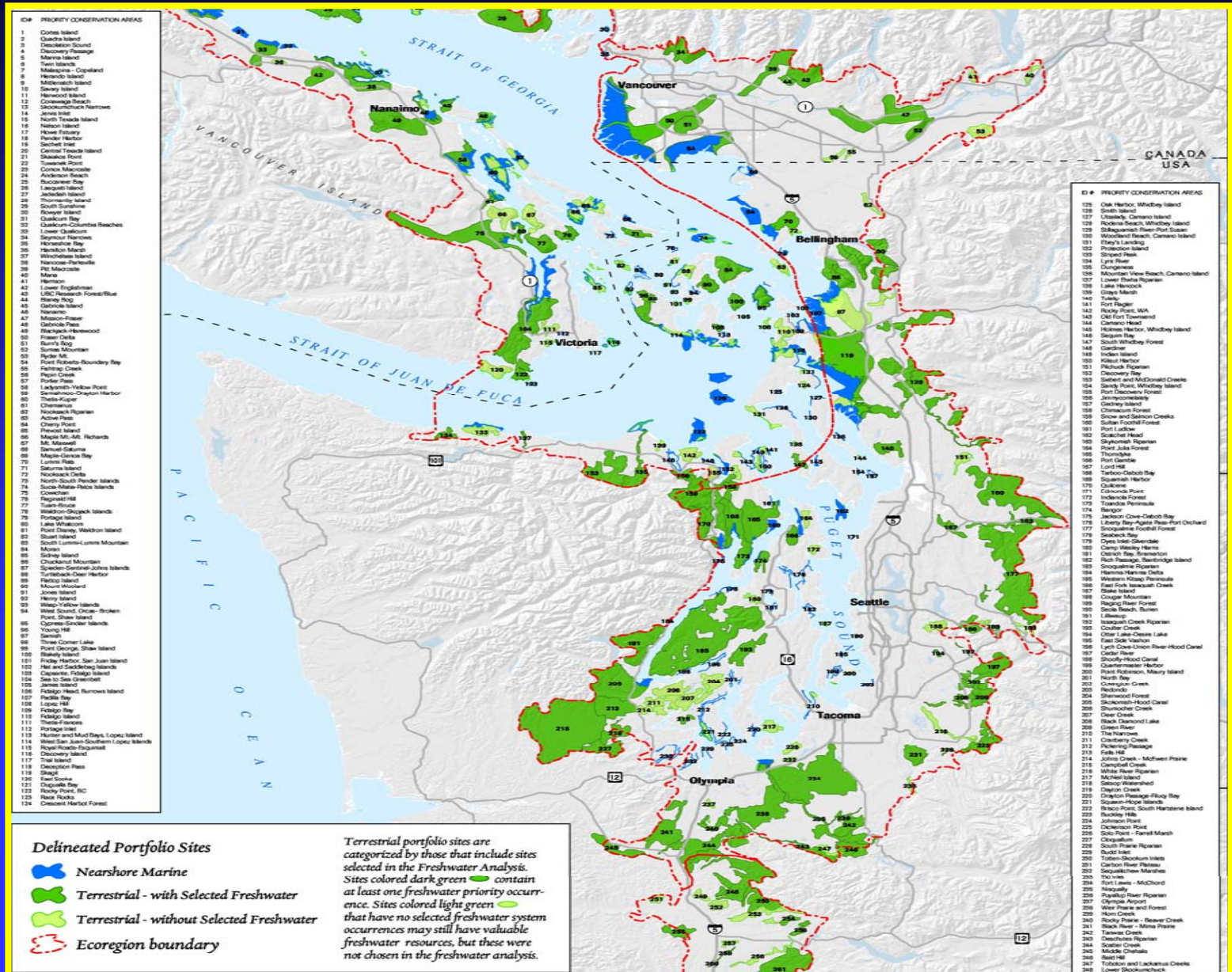
# Biodiversity Options Index

Indicates relative **conservation opportunity** for each assessment unit (hexagon)

- Rarity
- Representation
- Richness
- **Suitability**
- **Efficiency**



# Conservation Opportunity Areas



# Species of Greatest Conservation Need and Their Associated Habitats

- Instrument or tool:
  - ◆ CAP (Conservation Action Planning)
    - ◆ Identify effective conservation strategies
    - ◆ Consistent tracking of conservation actions and project outcomes
    - ◆ Adapt actions to improve strategy effectiveness and conservation impact



**Defining  
Your Project**

**Conservation  
Action  
Planning**

**Developing  
Strategies &  
Measures**

**Implementing  
Strategies &  
Measures**

**Using Results to  
Adapt & Improve**

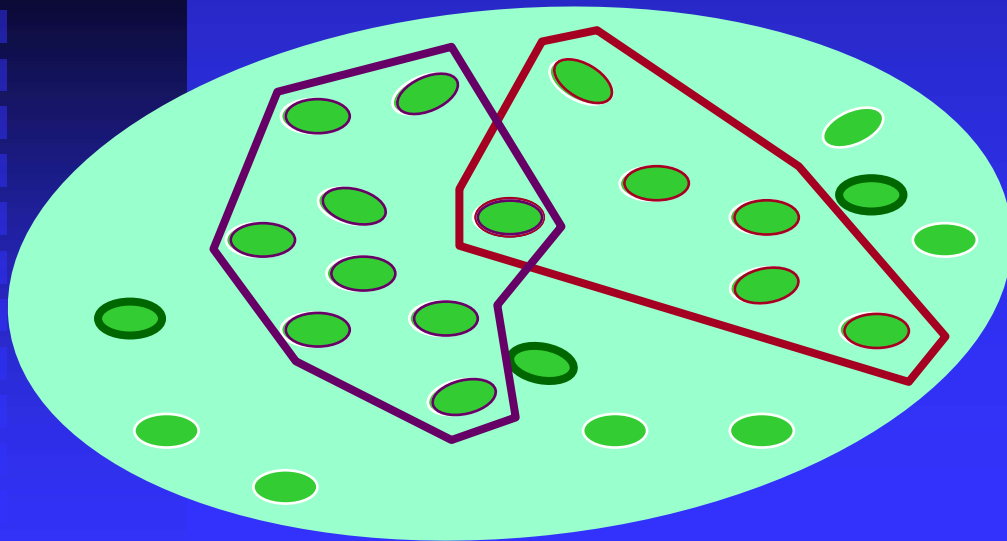
# Conservation Projects

## Single Area


- Conservation opportunity areas

## Multiple Area

- Species of greatest conservation need
- Priority habitats
- Wide-spread problems



# CAP Worksheet Home Page

Home		Conservation Project Management Workbook		 Full Version <small>SAVING THE LAST GREAT PLACES ON EARTH</small>	
Welcome		A tool for developing strategies, taking action, and measuring success			
Adjust Screen Size		Version 4b © 2004 The Nature Conservancy			
Project Scope and Targets			Links		
Project:	Tieton Dry Forest Landscape Project		Instructions	Toolbar	?
Ecoregion(s):	East Cascades		Assess Target Viability		?
Select Ecoregion(s)			Identify Stresses and Sources of Stress		?
Conservation Targets	1:	Dry forest	Develop Strategies		?
	2:	Stream ecological system	Describe Monitoring Plan		?
	3:	Riparian System	Summary Tables and Other Worksheets		?
	4:	Cliffs/Talus	Workbook Setup (Establecer libro de trabajo) (Organização do Programa)	Reset Menus and Screens	?
	5:	Shrub-steppe	Approved to share within The Nature Conservancy?		Yes
	6:	Wetlands, Seeps, and Springs	Approved to share outside The Nature Conservancy?		No
	7:	Oak woodlands	"Beta" version:	ConPrijMgmt_v4b.xls	12-Nov-04
View Target Types	8:				
Contact name:	Mark Goering				
Title, Office:	GIS Manager, Seattle WA				
Organization:	The Nature Conservancy				
Email Address:	mgoering@tnc.org				
Date:	November-05				

# Sample CAP Spreadsheet

Threats - Sources of Stress		altered FRCC	Altered overstory plant community composition and structure	Habitat Fragmentation	Habitat Destruction or Conversion	Parasites/disease	Altered understory plant community composition and structure	-	-	Threat to System Rank
Stress Rank		High	Very High	Low	Low	High	Medium	-	-	
1	Threat	Fire exclusion								Very High
	Contribution	Very High	Very High	-	-	Very High	Medium			
	Irreversibility	High	High	-	-	High	Medium			
	Threat Rank (override)									
	Threat Rank	High	Very High	-	-	High	Low	-	-	
2	Threat	Fire Supression activities/tactics								Medium
	Contribution	Low	Low	High	Low	-	High			
	Irreversibility	Low	Low	Very High	Low	-	Very High			
	Threat Rank (override)									
	Threat Rank	Low	Medium	Low	-	-	Medium	-	-	
3	Threat	Destructive Resource Harvesting (forest practices e.g. slash, unit placement)								Very High
	Contribution	High	High	High	Low	-	Medium			
	Irreversibility	High	High	High	Medium	-	Very High			
	Threat Rank (override)									
	Threat Rank	High	Very High	Low	-	-	Medium	-	-	

# Process



- Review results from analyses to determine any reduction or elimination relative to identified priorities.
- Identify action items for WDFW, and action items for conservation partners, NGOs and stakeholders.
- Develop a rough timeline.

# Process

- Compare wildlife action plans across ecoregions relative to statewide priorities and available resources.



# Group Commitment

